

# THE KNIGHTSBRIDGE ESTATE.

---

Retail  
Availability  
5 Sloane  
Street

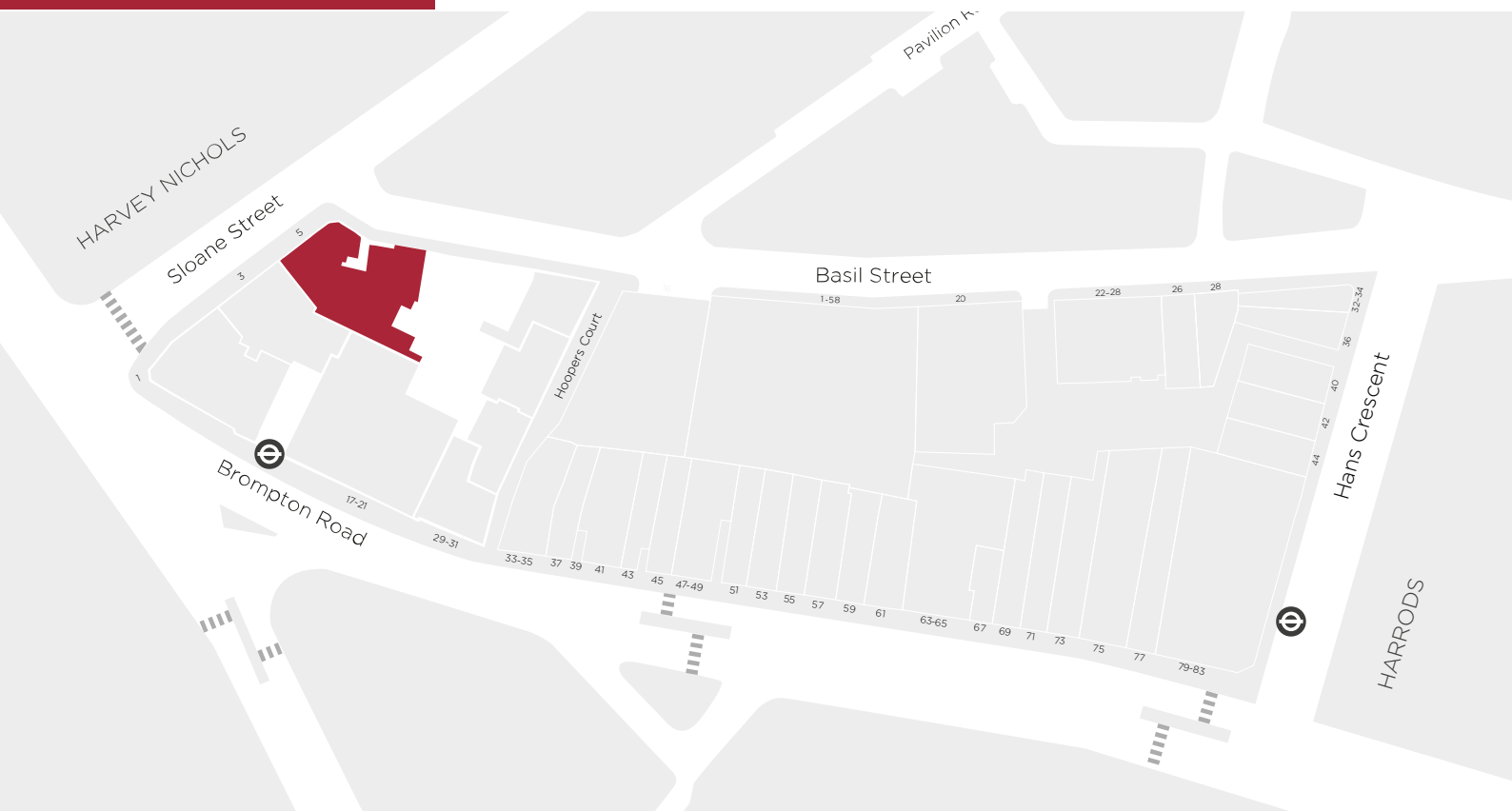


5

**SLOANE STREET**

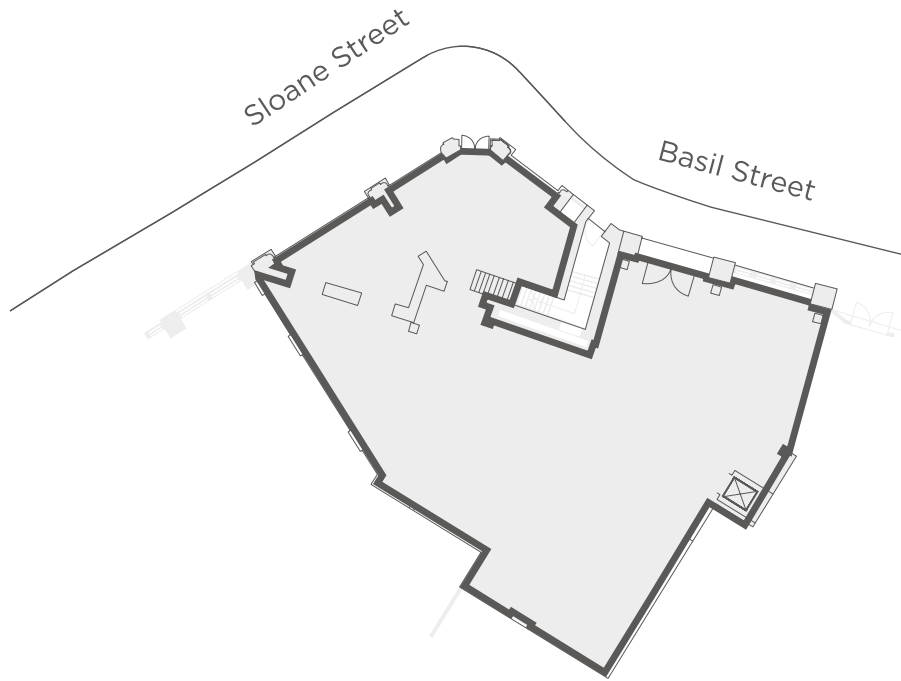
A best in class flagship store, set across two floors in a prominent Sloane Street location.

- 9,818 sq ft / 912 sq m
- Ground and Basement floors
- Substantial floor to ceiling height
- Ground floor ceiling height - 3.74 - 4.53 metres
- Dedicated service yard and goods lift
- Integrated servicing
- Available April 2020

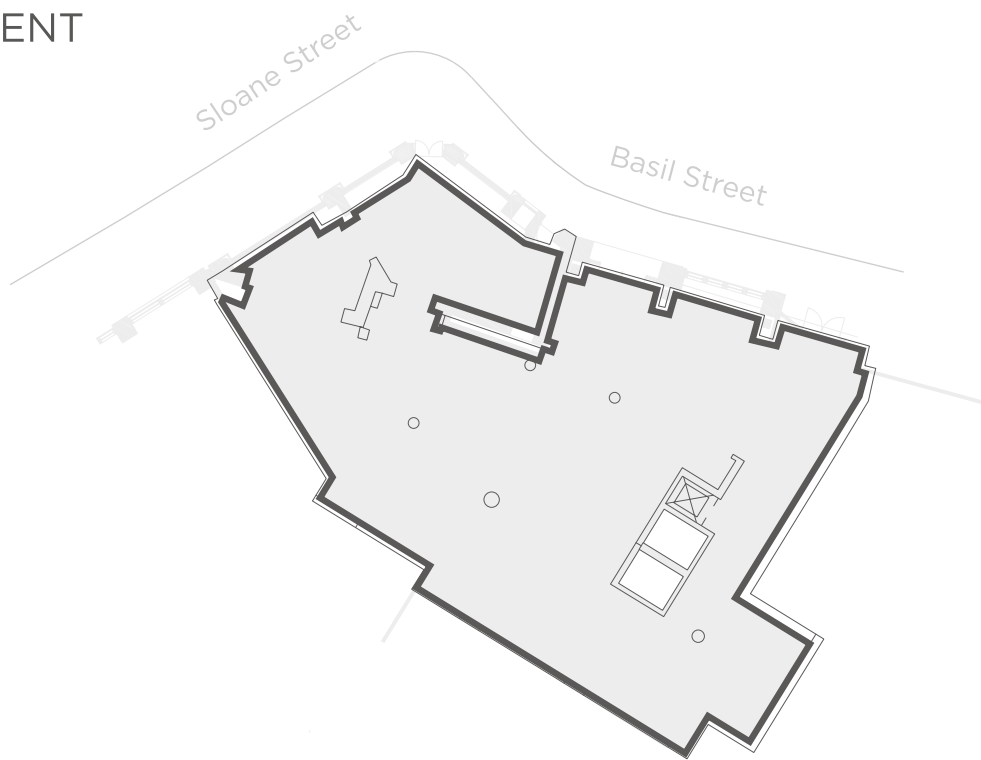


\*All floorplans and CGIs are indicative only and subject to design development

## GROUND FLOOR



## BASEMENT





# Get in touch

Please contact us to enquire about the retail unit.

Owned by

**OLYAN**<sup>®</sup>

Asset & Development Manager

**Chelsfield**

**CBRE**

Steven Stedman

[steven.stedman@cbre.com](mailto:steven.stedman@cbre.com)

020 7494 6900



Scott Murdoch

[scott.murdoch@cwm.co.uk](mailto:scott.murdoch@cwm.co.uk)

020 7182 2000