

THE
KNIGHTSBRIDGE
ESTATE.

Retail
Availability
33-35
Brompton Road

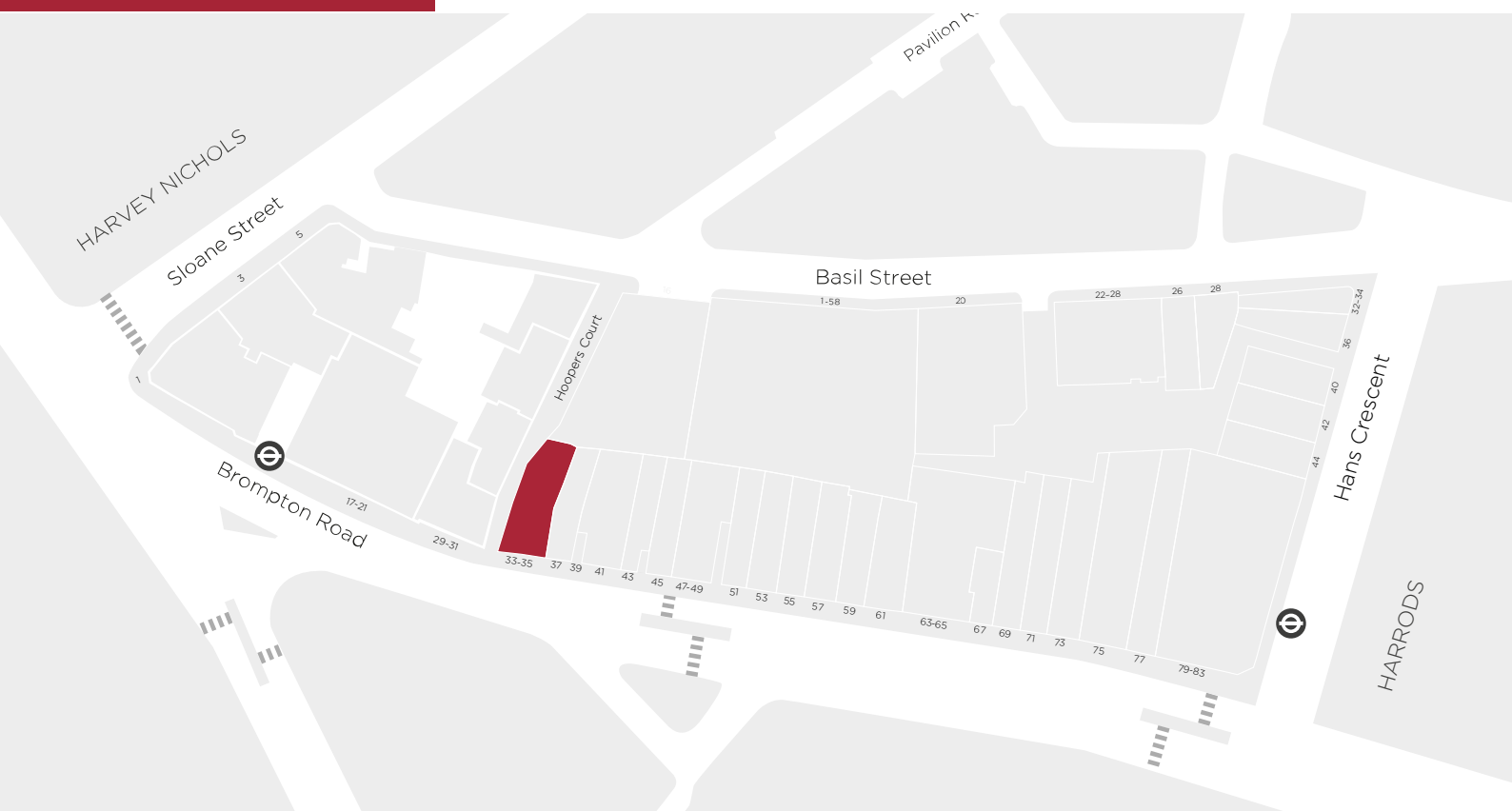


33-35

BROMPTON ROAD

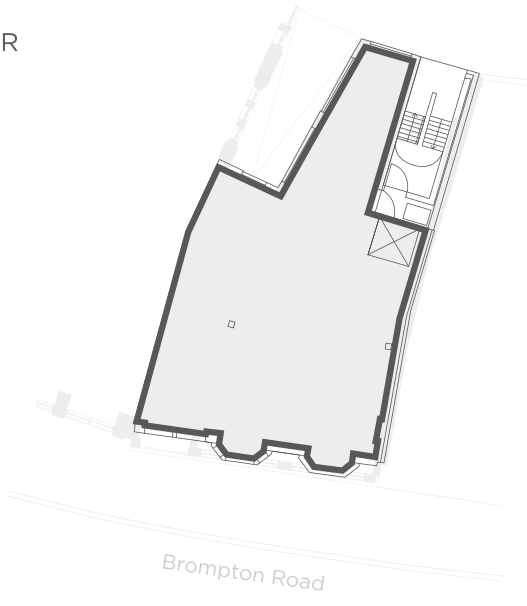
A best in class flagship store, set across three floors in a prime Brompton Road location.

- 6,383 sq ft / 593 sq m
- Basement, Ground and First Floors
- Ground floor ceiling height — 4.15 metres
- Dedicated service yard and goods lift
- Integrated Servicing
- Available August 2020

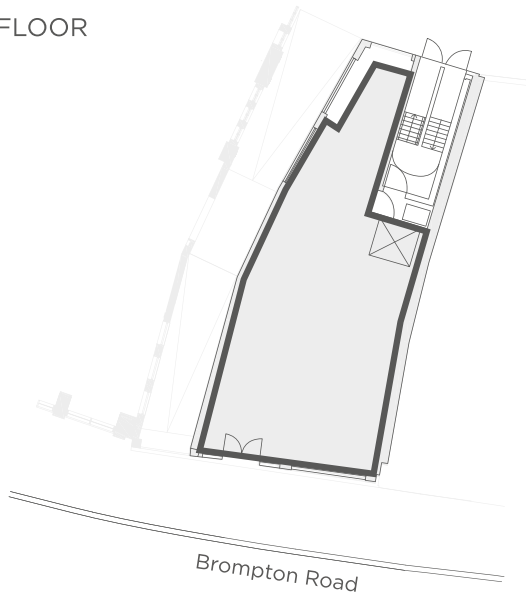


*All floorplans and CGIs are indicative only and subject to design development

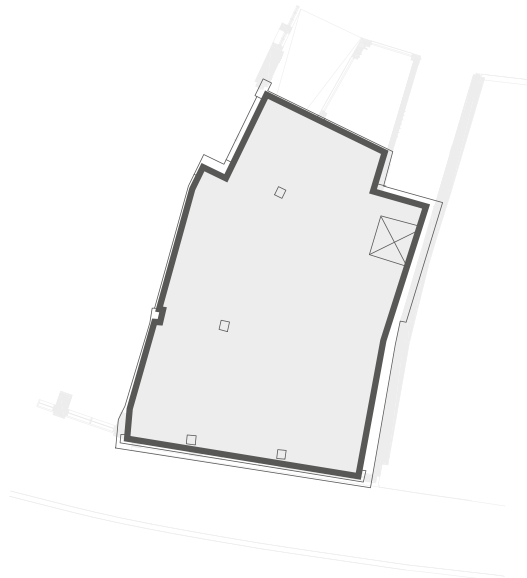
FIRST FLOOR



GROUND FLOOR



BASEMENT





Get in touch

Please contact us to enquire about the retail unit.

Owned by



Asset & Development Manager

Chelsfield



Steven Stedman

steven.stedman@cbre.com

020 7494 6900



Scott Murdoch

scott.murdoch@cwm.co.uk

020 7182 2000